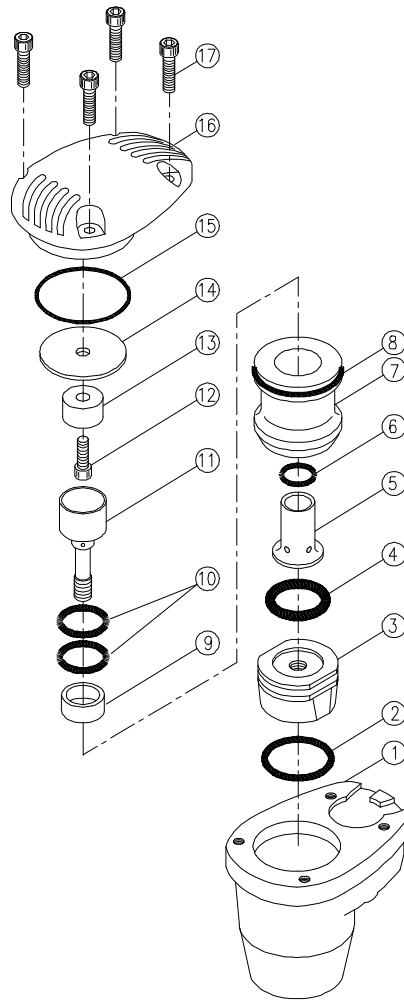




GISON Pneumatic Tools

GAH-15 Auto Hammer



PARTS LIST

✳ :Consuming

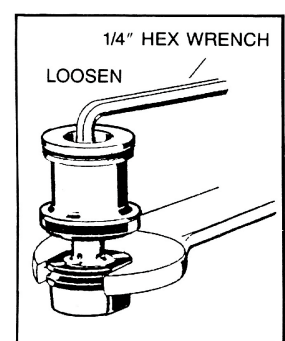
Part

Item No.	Part No.	Description	Qty.	Item No.	Part No.	Description	Qty.
1	015001	Air Inlet	1	7	015007	O-Ring	1
2	015002	Housing	1	8	015008	Valve	1
3	015003	O-Ring	1	9	015009	O-Ring	1
4	015004	Hammer Tip	1	10	015010	Bumper	1
	-SS	Super Soft Plastic		11	015011	O-Ring	2
	-S	Soft Plastic		12	015012	Stem	1
	-M	Medium Plastic		13	015013	Screw	1
	-H	Hard Plastic		14	015014	Plug	1
	-AL	Aluminium		15	015015	Exhaust Seat	1
	-ST	Steel		16	015016	O-Ring	1
5	015005	Stroke Control Spacer	1	17	015017	Cap	1
6	015006	Sleeve	1	18	015018	Screw	4

Changing hammer tips:

1. Remove cap and slide out valve assembly and hammer tip.
Remove O-Ring from hammer tip.
2. Hold hammer tip with wrench (or in vise) and use 1/4" hex. wrench to remove hammer tip.
3. Fit O-Ring to new hammer tip.
4. Reassemble tool.

Note: Tighten assembly securely when installing hammer tip.



Operating Instructions:

Air Pressure:

- The **Auto Hammer** requires a minimum air pressure of 25 lbs. and a maximum of 125 lbs. Operation above 125 lbs. air pressure will cause internal damage.

Air Lines and Fittings:

- The hose and fitting size of the **Auto Hammer** is 1/4". Although, the tool uses only 2~4 CFM. at maximum operating speed, you should insure maximum air flow for proper installation if air flow is restricted it is recommended that you install a 3~5 gal. (10~20 lites) surge tank within 15 feet (5 m) of the work area.

Air Filter and Lubricator:

- Since the Auto Hammer tool is a high speed pneumatic tool, trouble free use is best obtained by using a 3/8" or larger filter and lubricator.
- Clean the filter from time to time and empty the water container every day. Set the pressure regulator according to your requirements.
- Regulate the lubricator to get two drops of oil per minute which can be checked at the show glass.
- CAUTION: Warranty not honoured unless tool is used with filter and lubricator.

Operation:

- Remember, your **Auto Hammer** tool is an automatic hammer and not a gun. Therefore, it has no trigger. It starts automatically when the hammer tip is pressed against the workpiece. The Operator needs only apply a very slight amount of pressure to activate the tool.

Operator Technique:

- **Single** hammer blow: A light tap of hammer tip against the workpiece and instant withdrawal away from workpiece will permit a single blow.
- Multiple hammer blows: A light tap of hammer tip against the workpiece and continued light pressure against workpiece and continuous hammering.
- **Hammer force:** This is controlled by your air line pressure. The tool will operate from 25 ~ 125 psi. and should be regulated to what is best for your particular application.

Cleaning:

- When cleaning your **Auto Hammer** tool, avoid the use of solvents on all rubber parts. Do not use other than our special oil for pneumatic tools in order to prevent damages.

Warranty:

- The vendor undertakes upon written request of the purchaser to repair or replace at his own discretion and as quickly as possible any parts exhibiting deficiencies due to faulty material, bad design or poor workmanship. Replaced parts shall become the vendor's property.
- The vendor shall bear only the costs resulting from the repair or replacement of defective parts in his own factory. If, for any reason beyond the vendor's control such parts cannot be repaired or replaced in his own factory, all additional costs resulting therefrom shall be borne by the purchaser.
- The purchaser shall not be entitled to claim indemnity for deficiencies in the goods delivered in particular to damages or cancellation of the contract.
- The guarantee period is 12 months, or, in the case of 24-hour operation 6 months. It begins when the goods are despatched from the vendor's works.
- Excluded from the guarantee are losses resulting from natural wear. Improper maintenance, failure to observe the operating instructions, excessive loading, the use of unsuitable media, the influence of chemical action or other reasons beyond the control of the vendor.
- The vendor's liability shall cease if the purchaser or a third party undertakes changes or repairs without the vendor's written consent.
- The place of performance and jurisdiction for both purchaser and vendor is the registered address of the vendor.