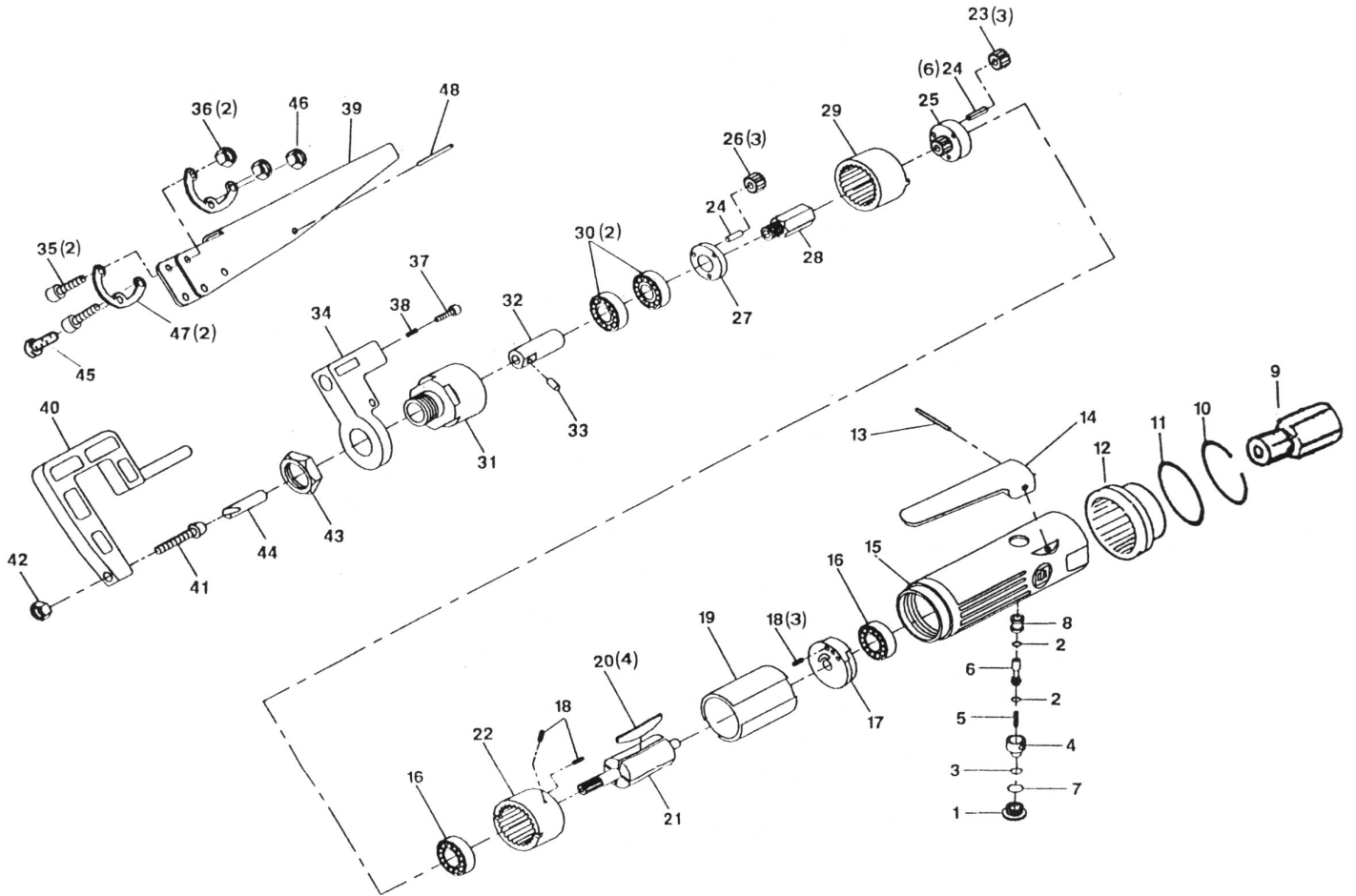




# GISON Pneumatic Tools

## GP-921C Air Spot Drill



### PARTS LIST

✳ : Consuming Part

| Item No. | Part No. | Description                    | Qty. | Item No. | Part No. | Description           | Qty. |
|----------|----------|--------------------------------|------|----------|----------|-----------------------|------|
| 1        | 921C01   | Value Screw                    | 1    | 25       | 921C25   | Planet Carrier        | 1    |
| 2        | 921C02   | O-Ring                         | 1    | ✳ 26     | 921C26   | Planet Gear           | 3    |
| 3        | 921C03   | O-Ring                         | 1    | 27       | 921C27   | Planet Cage           | 1    |
| 4        | 921C04   | Air Controller                 | 1    | 28       | 921C28   | Spindle Shaft         | 1    |
| 5        | 921C05   | Valve Spring                   | 1    | 29       | 921C29   | Internal Gear         | 1    |
| 6        | 921C06   | Valve Stem                     | 1    | 30       | 921C30   | Ball Bearing          | 2    |
| 7        | 921C07   | O-Ring                         | 1    | 31       | 921C31   | Clamp Nut             | 1    |
| 8        | 921C08   | Valve Bushing                  | 1    | 32       | 921C32   | Spindle               | 1    |
| 9        | 921C09   | Inlet Bushing                  | 1    | 33       | 921C33   | Set Screw             | 1    |
| 10       | 921C10   | Retainer Ring                  | 1    | 34       | 921C34   | Arm Base              | 1    |
| 11       | 921C11   | O-Ring                         | 1    | 35       | 921C35   | Hexagon Head Bolt     | 2    |
| 12       | 921C12   | Exhaust Sley                   | 1    | 36       | 921C36   | Hexagon Nut           | 2    |
| 13       | 921C13   | Spring Pin                     | 1    | 37       | 921C37   | Set Screw             | 1    |
| 14       | 921C14   | Throttle Lever                 | 1    | 38       | 921C38   | Spring Niv            | 1    |
| 15       | 921C15   | Motor Housing                  | 1    | 39       | 921C39   | Grip Handle           | 1    |
| 16       | 921C16   | Ball Bearing                   | 2    | 40       | 921C40   | Arm                   | 1    |
| 17       | 921C17   | Bear End Plate                 | 1    | 41       | 921C41   | Cut In Adjusting Bolt | 1    |
| 18       | 921C18   | Spring Pin                     | 3    | 42       | 921C42   | Hexagon Nut           | 1    |
| 19       | 921C19   | Cylinder                       | 1    | 43       | 921C43   | Lock Nut              | 1    |
| ✳ 20     | 921C20   | Rotor Blade                    | 4    | 44       | 921C44   | Drill                 | 1    |
| 21       | 921C21   | Rotor                          | 1    | 45       | 921C45   | Hexagon Head Bolt     | 2    |
| 22       | 921C22   | Internal Gear With Fient Plate | 1    | 46       | 921C46   | Hexagon Nut           | 1    |
| ✳ 23     | 921C23   | Planet Gear                    | 3    | 47       | 921C47   | Clip Washer           | 2    |
| 24       | 921C24   | Planet Pin                     | 6    | 48       | 921C48   | Pin                   | 1    |