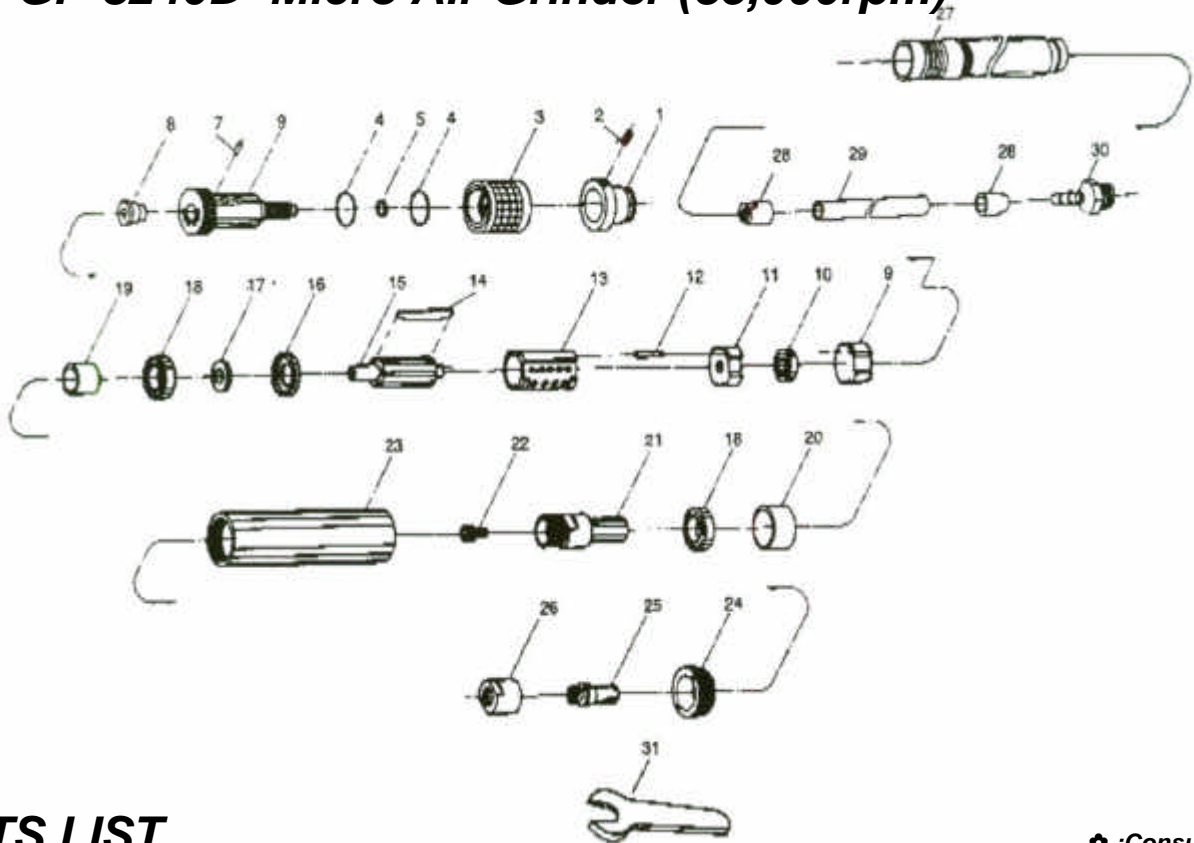




GISON Pneumatic Tools

GP-8240D Micro Air Grinder (35,000rpm)



PARTS LIST

✦ : Consuming Part

Item No.	Part No.	Description	Qty.	Item No.	Part No.	Description	Qty
01	8240D01	Rear End Holder	1	18	8240D18	Ball Bearing	1
02	8240D02	Screw	1	19	8240D19	Interior Bearing	1
03	8240D03	Sliding Knob	1			Retainer Bushing	
04	8240D04	O-Ring	1	20	8240D20	Outer Bearing	1
05	8240D05	O-Ring	1			Retainer Bushing	
06	8240D06	Hose Plug	1	21	8240D21	Collet Foundation	1
07	8240D07	Pin	1	22	8240D22	Screw	1
08	8240D08	Plug	1	23	8240D23	Sleeve	1
09	8240D09	Intake Plate	1	24	8240D24	Front Cover	1
10	8240D10	Ball Bearing	1	25	8240D25	Collet	1
11	8240D11	Bearing Plate	1	26	8240D26	Clamping Nut	1
12	8240D12	Pin	1	27	8240D27	Muffler Tube	1
13	8240D13	Cylinder	1	28	8240D28	Hose Ring	1
✦ 14	8240D14	Rotor Blade	1	29	8240D29	Air Hose	1
15	8240D15	Rotor	1	30	8240D30	Inlet Connector	1
16	8240D16	Lateral Disc	1	31	8240D31	Spanner	1
17	8240D17	Spacer	1				

Application: Ideal for grinding metal model, grinding the teeth of model, machine processing, engrave wood, gold processing and parts processing.

Please read follows carefully before operating:

1. Avoid heavy power impact to damage the precious Front Chuck.
2. To get the Abrasive Wheel tighten, please use wrench to turn reverse side everytime before operation.
3. Before operation, please be sure the Rotary Mounted Point is straight.
4. Always wear Safety Goggles to guard against eye injury cause be flying particles.
5. Suggest to use light density, non-detergent lubricant oil (i.e. #60).
6. Applicable to air working pressure 0~90 psig, regular speed: **35,000 RPM**.

Maintenance:

Do not try disassemble an airmotor by yourself, because it requires skillful person to maintain the tools. Repairing cost will be charged even it is during a term of gurantee, if the tool exposed rust or no trace of lubricant on a cylinder during the course of normal repair.

Ball Bearings:

A proper break in operation given to a new grinder during its initial use with such low pressure as 50~55 psi for the first 2~3 hours will favor to the grinder for its longer span of service afterwards.