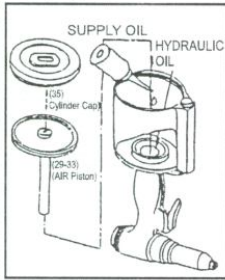
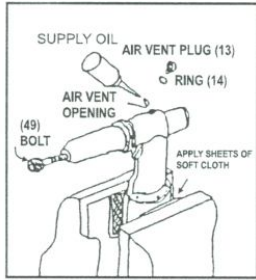




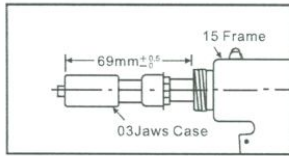
# GISON Pneumatic Tools

## GP-101 Air Hydraulic Riveter

**ENERGY SAVING TYPE**  
**ADDING OIL METHOD (一) (二)**

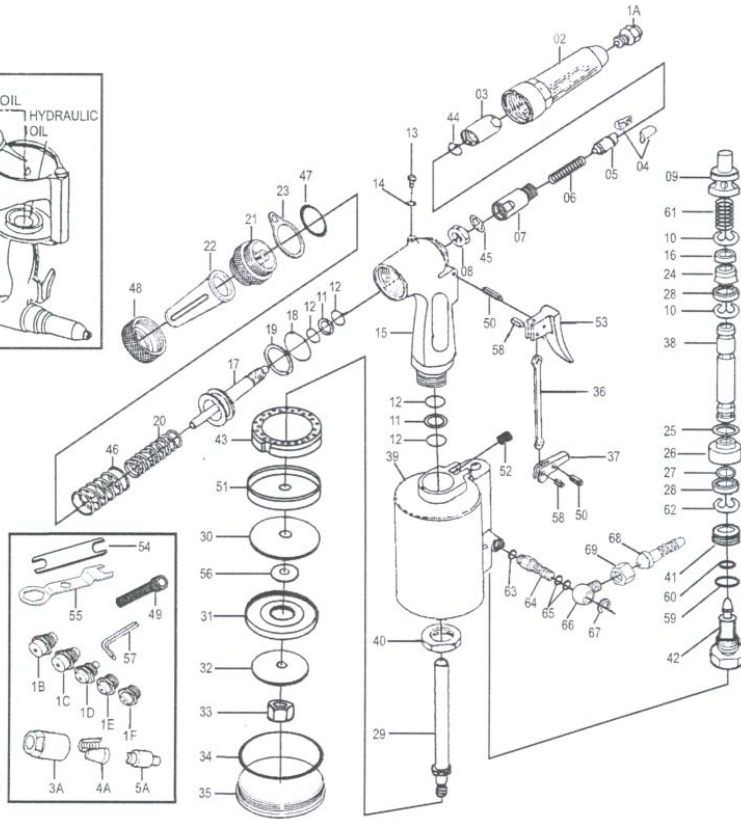


**ADJUSTING LENGTH**



**SPECIFICATIONS**

Traction Power: 1603 kg.f (3535 LBS.F)  
 Stroke Length: 14mm (0.55")  
 Air Hose Size: 3/8" I.D.  
 Air Inlet: 1/4" PT(NPT)  
 Net Weight: 1.845 kgs (4.06 LBS)  
 Air Consumption: 2.908 Liter/Stroke  
 Air Pressure: 6~6.5 kg/cm<sup>2</sup> (85 -92 PSI)  
 Capacity: 1/4", 7/32", 3/16", 5/32", 1/8", 3/32".



### PARTS LIST

★ : Optional Accessories

Item No.	Part No.	Description	Qty.	Item No.	Part No.	Description	Qty.
1A	101001A	Nose Piece 6.4 m/m (1/4")	1	27	101027	O-Ring (4.4 x 2.62)	1
1B	101001B	Nose Piece 6.0 m/m (7/32")	1	28	101028	Ring Seal Washer	2
1C	101001C	Nose Piece 4.8 m/m (3/16")	1	29	101029	Air Piston Rod	1
1D	101001D	Nose Piece 4.0 m/m (5/32")	1	30	101030	Air Piston Board (8 x 75)	1
1E	101001E	Nose Piece 3.2 m/m (1/8")	1	31	101031	Cup Packing	1
1F	101001F	Nose Piece 2.4 m/m (3/32")	1	32	101032	Packing Washer (8 x 65)	1
02	101002L	Nose Housing (93L)	1	33	101033	Rock Nut (M8 x 11L)	1
★ 02L	101002L	Long Nose Housing (202L)	1	34	101034	O-Ring (G80)	1
03	101003	Jaw Case (3/16"~1/4")	1	35	101035	Cylinder Cap	1
03A	101003A	Jaw Case (3/32"~5/32")	1	36	101036	Trigger Rod	1
04	101004	Jaws (6 x 12)(3/16"~1/4")	2	37	101037	Trigger Lever	1
04A	101004A	Jaws (5 x 10)(3/32"~5/32")	2	38	101038	Valve Tube	1
05	101005	Jaw Pusher (3/16"~1/4")	1	39	101039	Air Cylinder	1
05A	101005A	Jaw Pusher (3/32"~5/32")	1	40	101040	Frame Lock Nut	1
06	101006	Jaw Case Spring	1	41	101041	Nipple Screw	1
07	101007	Jaw Case Back Part	1	42	101042	End Plug	1
★ 07L	101007L	Long Jaw Case Back Part	1	43	101043	Rubber Cushion	1
08	101008	Jaw Case Lock Nut	1	44	101044	Jaw Case O-Ring (S12)	1
09	101009	Valve Pusher	1	45	101045	Washer Ring	1
10	101010	E-Ring (E6)	2	46	101046	Return Spring (Outer)	1
11	101011	Back Up Ring	2	47	101047	Frame Cap O-Ring (S26)	1
12	101012	O-Ring	4	48	101048	Cap Nut	1
13	101013	Air Blow Plug (M8 x 8)	1	49	101049	Bolt Plug (3/8"-24UNF x 35L)	1
14	101014	Packing	1	50	101050	Pin (3 x 20)	1
15	101015	Frame	1	51	101051	Rubber Cushion Seat	1
16	101016	Collar For Valve Tube	1	52	101052	Lock Screw (M6 x 5L)	1
17	101017	Oil Piston	1	53	101053	Trigger (Long)	1
18	101018	O-Ring (P24)	1	54	101054	Spanner 17 And 19	1
19	101019	Back Up Ring (P24)	1	55	101055	Spanner	1
20	101020	Return Spring (Inner)	1	56	101056	Piston Washer Seat	1
21	101021	Frame Cap	1	57	101057	Hex. Wrench M5 And M8	2
22	101022	Safety Cap	1	58	101058	Trigger Pin (3 x 8)	1
23	101023	Hanger Clip	1	59	101059	O-Ring (P12)	1
24	101024	Air Valve Seal	1	60	101060	Seal	1
25	101025	O-Ring (P10A)	1	61	101061	Pusher Spring	1
26	101026	Valve Seat	1	62	101062	E-Ring (E6)	1