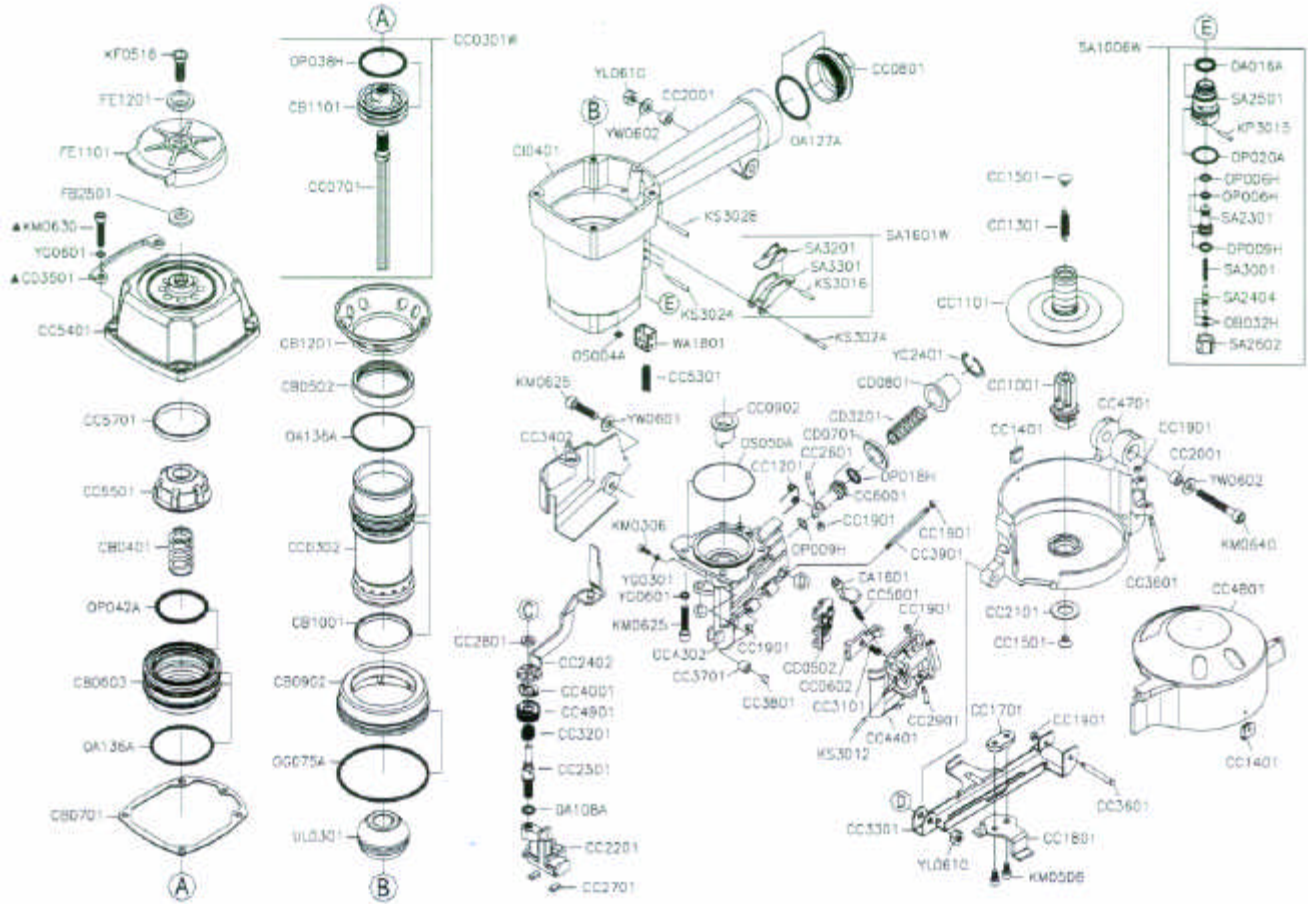




GISON Pneumatic Tools

GP-R45 Air Coil Roofing Nailer



PARTS LIST

✳ : Consuming Part

| Item No. | Part No. | Description | Qty. | Item No. | Part No. | Description | Qty. | Item No. | Part No. | Description | Qty. |
|----------|----------|--------------------|------|----------|----------|----------------------------|------|----------|----------|--------------------------|------|
| 1 | CA1601 | Door Latch | 1 | 36 | CC3201 | Compression Spring | 1 | 71 | KS3016 | Spring Pin ø3-16L | 1 |
| 2 | CB0401 | Compression Spring | 1 | 37 | CC3301 | Gage Bracket | 1 | 72 | KS3024 | Spring Pin ø3-24L | 3 |
| 3 | CB0502 | Cylinder Ring | 1 | 38 | CC3402 | Trip Cover | 1 | 73 | KS3028 | Spring Pin ø3-28L | 1 |
| 4 | CB0603 | Head Valve Piston | 1 | 39 | CC3601 | Pin | 2 | 74 | OA016A | O-Ring ARP568-016 | 1 |
| 5 | CB0701 | Cap Seal | 1 | 40 | CC3701 | Seat | 1 | 75 | OA108A | O-Ring ARP568-108 | 1 |
| 6 | CB0902 | Cylinder Ring | 1 | 41 | CC3801 | Steel | 1 | 76 | OA127A | O-Ring ARP568-127 | 1 |
| 7 | CB1001 | Check Seal | 1 | 42 | CC3901 | Pin | 1 | 77 | OA136A | O-Ring ARP568-136 | 3 |
| 8 | CB1101 | Main Piston | 1 | 43 | CC4001 | Fixed Seat | 1 | 78 | OB032H | O-Ring 2.5x1.4 | 2 |
| 9 | CB1201 | Collar | 1 | 44 | CC4302 | Nose | 1 | 79 | OG075A | O-Ring G75 | 1 |
| 10 | CC0301W | Driver Assy. | 1 | 45 | CC4401 | Door | 1 | 80 | OP006H | O-Ring 5.8x1.9 | 2 |
| 11 | CC0302 | Cylinder | 1 | 46 | CC4701 | Canister | 1 | 81 | OP009H | O-Ring 8.8x1.9 | 2 |
| 12 | CC0502 | Feed Pawl | 1 | 47 | CC4801 | Canister Cover | 1 | 82 | OP018H | O-Ring 17.8x2.4 | 1 |
| 13 | CC0602 | Holding Pawl | 1 | 48 | CC4901 | Adjusting Wheel | 1 | 83 | OP020A | O-Ring P20 | 1 |
| 14 | CC0701 | Driver | 1 | 49 | CC5001 | Compression Spring | 1 | 84 | OP038H | O-Ring 37.7x3.5 | 1 |
| 15 | CC0801 | End Cap | 1 | 50 | CC5301 | Compression Spring | 1 | 85 | OP042A | O-Ring P42 | 1 |
| 16 | CC0902 | Driver Guide | 1 | 51 | CC5401 | Cylinder Cap | 1 | 86 | OS004A | O-Ring S-4 | 1 |
| 17 | CC1001 | Magazine Post | 1 | 52 | CC5501 | Piston Stop | 1 | 87 | OS050A | O-Ring S-50 | 1 |
| 18 | CC1101 | Platform Assy. | 1 | 53 | CC5701 | Spacer | 1 | 88 | SA1006W | Restrictive Trigger Assy | 1 |
| 19 | CC1201 | Spring | 1 | 54 | CC6001 | Feed Piston Cap | 1 | 89 | SA1601W | Trigger Assy. | 1 |
| 20 | CC1301 | Pull Spring | 1 | 55 | CD0701 | Piston Bumper | 1 | 90 | SA2301 | Pilot Valve | 1 |
| 21 | CC1401 | Wear Clip | 2 | 56 | CD0801 | Feed Piston Cap | 1 | 91 | SA2404 | Trigger Valve Stem | 1 |
| 22 | CC1501 | Spring Receiver | 2 | 57 | CD3201 | Compression Spring | 1 | 92 | SA2501 | Trigger Valve Seat | 1 |
| 23 | CC1701 | Nut Plate | 1 | 58 | ? CD3501 | Wear Plate | 2 | 93 | SA2602 | Trigger Valve Seat | 1 |
| 24 | CC1801 | Gage | 1 | 59 | CI0401 | Body | 1 | 94 | SA3001 | Compression Spring | 1 |
| 25 | CC1901 | Bushing | 6 | 60 | FB2501 | Piston Stop | 1 | 95 | SA3201 | Contact Lever | 1 |
| 26 | CC2001 | Bushing | 2 | 61 | FE1101 | Exhaust Cap | 1 | 96 | SA3301 | Trigger | 1 |
| 27 | CC2101 | Retainer Post | 1 | 62 | FE1201 | Exhaust Cap Ring | 1 | 97 | UL0301 | Bumper | 1 |
| 28 | CC2201 | Trip Foot | 1 | 63 | KF0516 | Flat Hd. Bolt M5x0.8-16L | 1 | 98 | WA1801 | Safety Guide | 1 |
| 29 | CC2402 | Safety | 1 | 64 | KM0306 | Hex.Soc.Hd.Bolt M3x0.5-6L | 1 | 99 | YC2401 | C-Ring ø24 | 1 |
| 30 | CC2501 | Adjusting Pin | 1 | 65 | KM0508 | Hex.Soc.Hd.Bolt M5x0.8-8L | 2 | 100 | YG0301 | Spring Washer ø3 | 1 |
| 31 | CC2601 | Pin | 1 | 66 | ? KM0625 | Hex.Soc.Hd.Bolt M6x1.0-25L | 5 | 101 | YG0601 | Spring Washer ø6 | 8 |
| 32 | CC2701 | Block | 2 | 67 | ? KM0630 | Hex.Soc.Hd.Bolt M6x1.0-30L | 4 | 102 | YL0610 | Lock Nut M6x1.0 | 2 |
| 33 | CC2801 | Bushing | 1 | 68 | KM0640 | Hex.Soc.Hd.Bolt M6x1.0-40L | 1 | 103 | YW0601 | Flat Washer ø6 | 1 |
| 34 | CC2901 | Pin | 1 | 69 | KP3015 | Parallel Pin ø3x15L | 2 | 104 | YW0602 | Flat Washer ø6 | 2 |
| 35 | CC3101 | Compression Spring | 1 | 70 | KS3012 | Spring Pin ø3-12L | 1 | | | | |