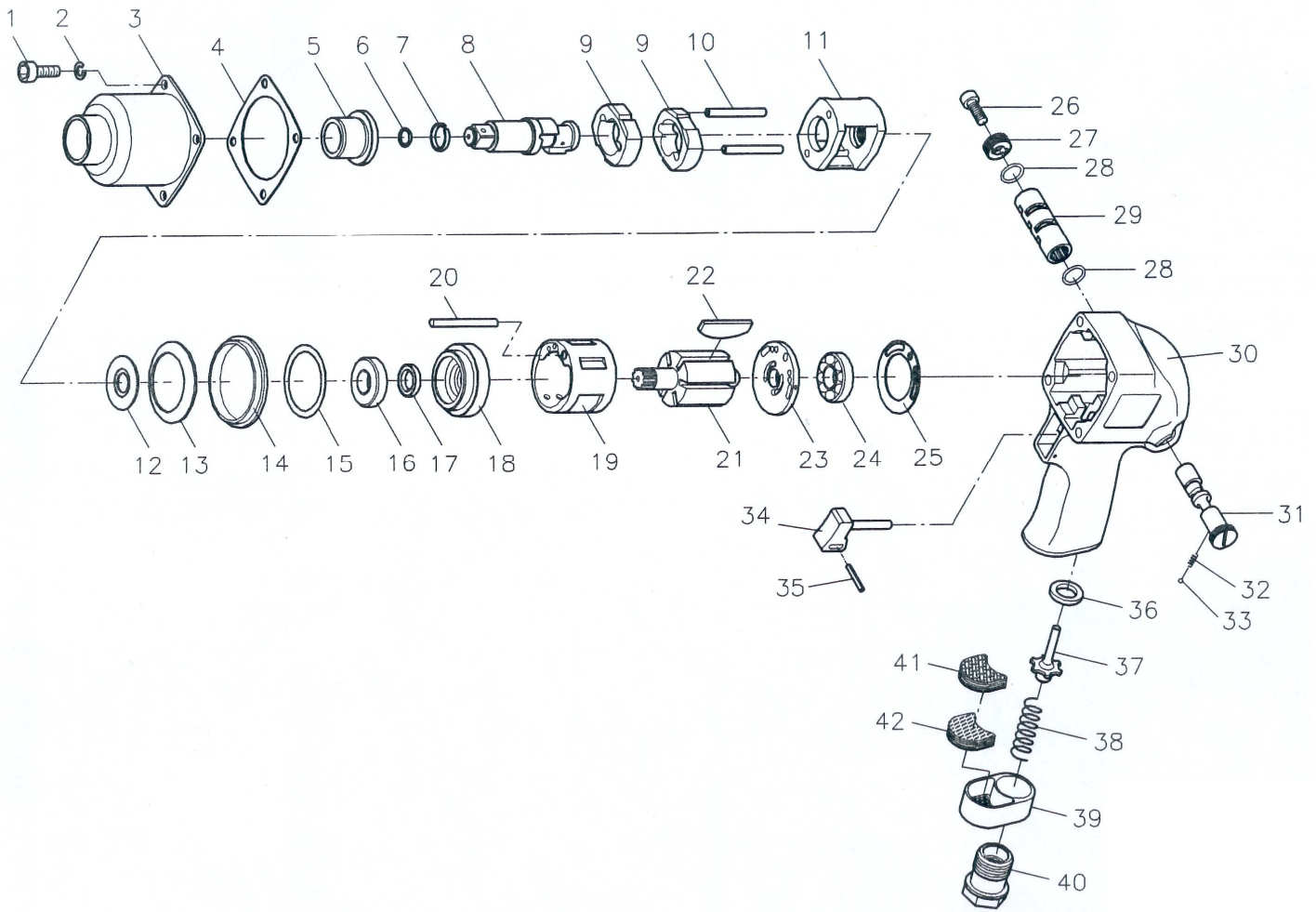




# GISON Pneumatic Tools

## GW-12D 3/8" & 1/2" Professional Air Impact Wrench



### PARTS LIST

✦ : Consuming Part

Item No.	Part No.	Description	Qty.	Item No.	Part No.	Description	Qty.
1	12D001	Cap Screw	4	21	12D021	Rotor	1
2	12D002	Spring Washer	4	22	12D022	Rotor Blade	6
3	12D003	Hammer Case	1	23	12D023	Rear End Plate	1
4	12D004	Front Gasket	1	24	12D024	Ball Bearing	1
5	12D005	Anvil Bushing	1	25	12D025	Rear Gasket	1
6	12D006A	O-Ring (3/8" Anvil)	1	26	12D026	Round Head Screw	1
	12D006B	O-Ring (1/2" Anvil)	1	27	12D027	Regulator Knob	1
7	12D007A	Anvil Collar (3/8")	1	28	12D028	O-Ring	2
	12D007B	Anvil Collar (1/2")	1	29	12D029	Valve Sleeve	1
8	12D008A	Anvil (3/8")	1	30	12D030	Motor Housing	1
	12D008B	Anvil (1/2")	1	31	12D031	Reverse Valve	1
9	12D009	Hammer	2	32	12D032	Spring	1
10	12D010	Hammer Pin	2	33	12D033	Steel Ball	1
11	12D011	Hammer Cage	1	34	12D034	Trigger	1
12	12D012	Rear Washer	1	35	12D035	Spring Pin	1
13	12D013	Motor Clamp Washer	2	36	12D036	Bushing	1
14	12D014	Hammer Case Pilot	1	37	12D037	Valve Stem	1
15	12D015	Washer	1	38	12D038	Spring	1
16	12D016	Ball Bearing	1	39	12D039	Exhaust Deflector	1
17	12D017	Oil Seal	1		12D040A	Air Inlet (1/4"PF)	1
18	12D018	Front End Plate	1	40	12D040B	Air Inlet (1/4"PT)	1
19	12D019	Cylinder	1		12D040C	Air Inlet (1/4"NPT)	1
20	12D020	Pin	1				

✦ If you need to order parts, please mark both **Parts No.** and **Description.**

<http://www.gison.com>