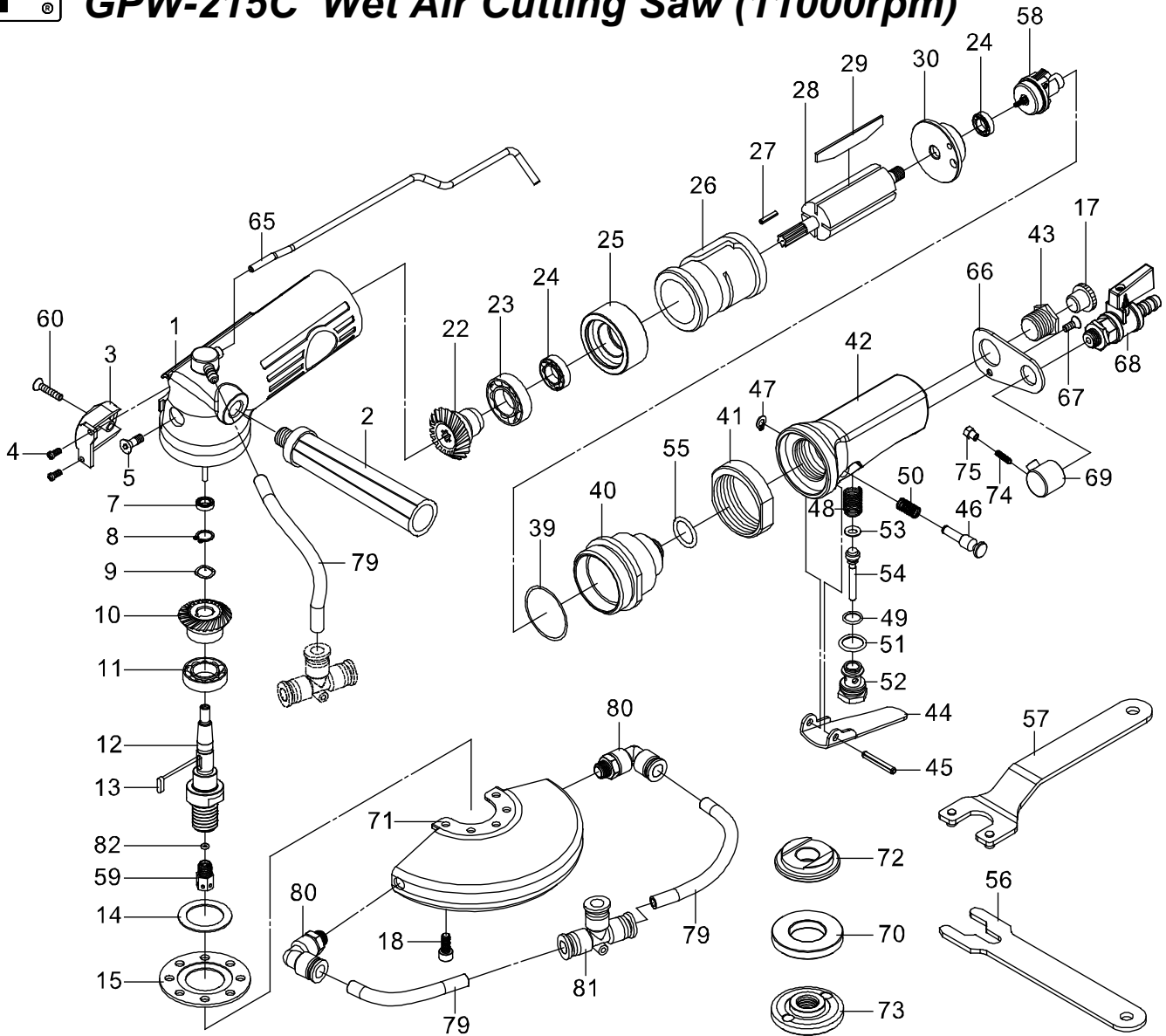




GISON Pneumatic Tools

GPW-215C Wet Air Cutting Saw (11000rpm)



PART LIST

★ :Consuming Parts

No.	Part No.	Description	Qty	No.	Part No.	Description	Qty	No.	Part No.	Description	Qty
1	215001B	Body Assy.	1	27	SP025	Spring Pin	1	57	829047	Disc Spanner	1
2	832006	Grip	1	★ 28	832024	Rotor	1	58	832h01	Governor Ass.	1
3	832064	Exhaust Cover	1	★ 29	829019	Rotor Blade	4	59	911048WC	Water Outlet Tip	1
4	TP3X10	Screw	2	30	829018	Rear Plate	1	60	MC005	Screw	1
5	MT001	Screw	1	39	OR032	O-Ring	1	65	911044W	Water Inlet Tube	1
★ 7	B626LLU	Ball Bearing	1	40	911040	Governor Case	1	66	911043W	Fixed Plate	1
8	C10	Retaining Ring	1	41	911041	Coupling Nut	1	67	MC002	Screw	1
9	WW 10	Wave Washer	1	42	911042W	Valve Housing	1	68	829058CW	Water Valve	1
★ 10	832010	Bevel Gear	1	43	832057	Hose Adapter	1	69	911045W	Brass Cover	1
11	B6202LLU	Ball Bearing	1	44	831053	Lever	1	70	911018WC	Disc Receiver(cutting)	1
12	911011W	Gear Shaft(5/8-11)	1	45	SP028	Spring Pin	1	71	911016C	Disc Cover(5")	1
	911011WA	Gear Shaft(M14)		46	831056	Safe Lever	1	72	911019AC	Disc Receiver (5/8-11)	1
13	KC004	Key	1	47	C5	Retaining Ring	1	73	911019WAC	Disc Receiver (M14)	
14	911015W	Preventing Ring	1	48	S022	Spring	1		911021AWC	Disc Nut (5/8-11)	1
15	911014W	Retainer	1	49	OR002	O-Ring	1		911021WC	Disc Nut (M14)	
17	829046	Plastic Cover	1	★ 50	S028	Valve Spring	1	74	MS019	Screw	1
18	CAP005	Cap Screw	5	51	OR031	O-Ring	1	75	911051W	Nut	1
★ 22	832015	Pinion Gear	1	52	911052	Bushing	1	79	831062W	PU Hose	3
★ 23	B6201LLU	Ball Bearing	1	53	OR034	O-Ring	1	80	831059W	L Type Joint	2
★ 24	B608LLU	Ball Bearing	2	★ 54	831061	Valve Stem	1	81	831060W	T Type Joint	1
25	829023	Front Plate	1	55	OR030	O-Ring	1	82	OR052	O-Ring	1
26	829022GH	Cylinder	1	56	911056a	Stop Spanner	1				