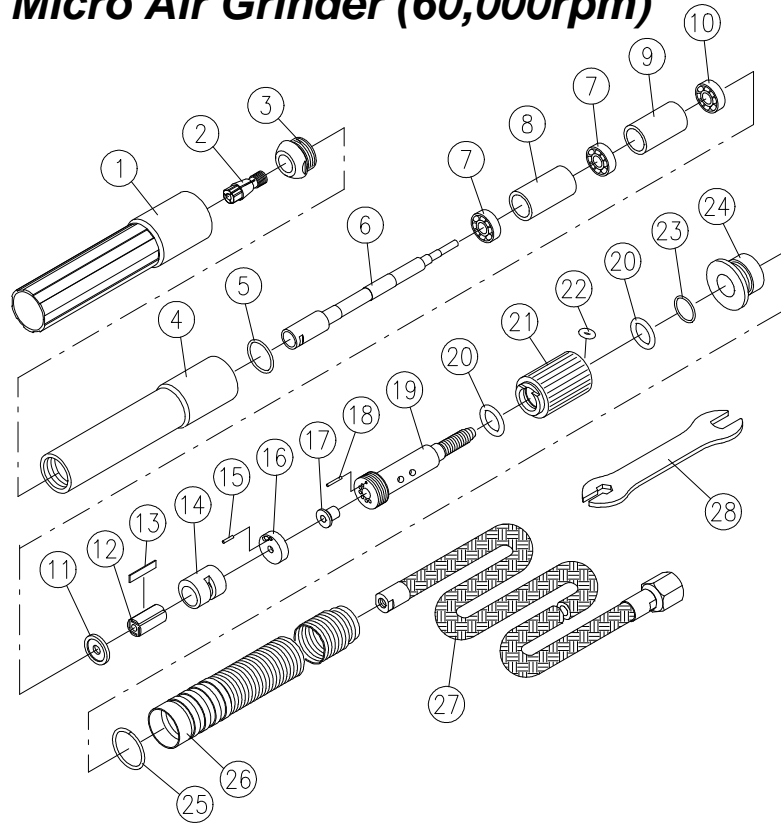




GISON Pneumatic Tools

GP-8242A Micro Air Grinder (60,000rpm)



PARTS LIST

✧ : Consuming Part

Item No.	Part No.	Description	Qty.	Item No.	Part No.	Description	Qty.
1	8242A01	Housing Protector	1	16	8242A16	Front End Plate	1
2	8242A02	Collet	1	✧ 17	8242A17	Intake Steel Tupe	1
3	8242A03	Housing Cap	1	18	8242A18	Pin	1
4	8242A04	Motor Housing	1	19	8242A19	Hose Plug	1
5	8242A05	O-Ring (15x1)	1	20	8242A20	O-Ring (10x2)	1
6	8242A06	Spindle	1	✧ 21	8242A21	Sliding Knob	1
✧ 7	8242A07	Ball Bearing (686ZZ)	2	22	8242A22	O-Ring (3x2.1)	1
8	8242A08	Spacer	1	23	8242A23	O-Ring (10x1)	1
9	8242A09	Spacer	1	24	8242A24	Rear Holder	1
10	8242A10	Ball Bearing (624ZZ)	1	25	8242A25	Clamp	1
11	8242A11	Rear End Plate	1	26	8242A26	Muffler Tube	1
✧ 12	8242A12	Rotor	1	27	8242A27	Air Hose	1
13	8242A13	Rotor Blades	4	28	8242A28	Spanner	2
14	8242A14	Cylinder	1	29	8242A29	Service Kit (20,13,10,07,02)	1
✧ 15	8242A15	Pin	1				

2010/9/7

Application: Ideal for grinding metal model, grinding the teeth of model, machine processing, engrave wood, gold processing and parts processing.

Please read follows carefully before operating:

1. Avoid heavy power impact to damage the precious Front Chuck.
2. To get the Abrasive Wheel tighten, please use wrench to turn reverse side everytime before operation.
3. Before operation, please be sure the Rotary Mounted Point is straight.
4. Always wear Safety Goggles to guard against eye injury cause be flying particles.
5. Suggest to use light density, non-detergent lubricant oil (i.e. #60).
6. Applicable to air working pressure 0~90 psig, regular speed: **80,000 RPM.**

Maintenance:

Do not try disassemble an airmotor by yourself, because it requires skillful person to maintain the tools. Repairing cost will be charged even it is during a term of gurantee, if the tool exposed rust or no trace of lubricant on a cylinder during the course of normal repair.

Ball Bearings:

A proper break in operation given to a new grinder during its initial use with such low pressure as 50~55 psi for the first 2~3 hours will favor to the grinder for its longer span of service afterwards.