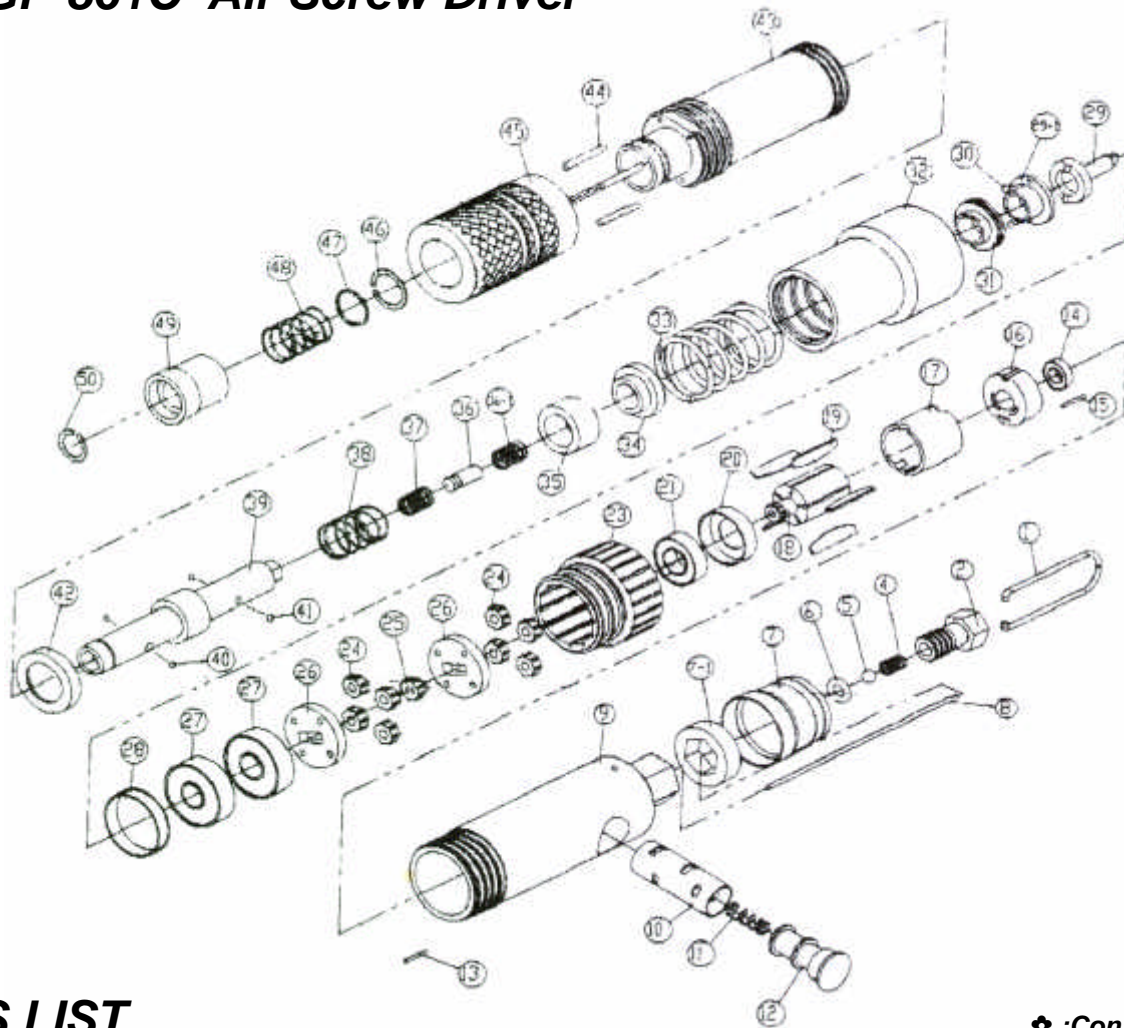




GISON Pneumatic Tools

GP-861C Air Screw Driver



PARTS LIST

✳ : Consuming Part

Item No.	Part No.	Description	Qty.	Item No.	Part No.	Description	Qty.
1	861C01	Hanger	1	28	861C28	Bearing Spacer	1
2	861C02	Inlet Bush	1	29	861C29	Clutch	1
4	861C04	Spiling	1	29-1	861C29a	Spindle (Front)	1
5	861C05	Valve Ball	1	30	861C30	Cam Clutch Ball	1
6	861C06	O-Ring	1	31	861C31	Ball Seat	1
7	861C07	Blow Cover	1	32	861C32	Gear Case	1
7-1	861C7a	Exhaust Oeflector	1	33	861C33	Spiling	1
8	861C08	Throttle Push Bar	1	34	861C34	Spring Receiver	1
9	861C09	Frame	1	35	861C35	Cam Rider	1
10	861C10	Change Valve Bush	1	36	861C36	Pilot Shaft	1
11	861C11	Change Valve Spring	1	36-1	861C36a	Spiling	1
12	861C12	Change Valve	1	37	861C37	Spiling	1
13	861C13	Pin	1	38	861C38	Spiling	1
14	861C14	Bearing	1	39	861C39	Spindle (Front)	1
15	861C15	Pin	1	40	861C40	Cam Rider Ball	1
16	861C16	End Plate (Back)	1	41	861C41	Cam Rider Ball	1
17	861C17	Cylinder	1	42	861C42	Spring Receiver	1
18	861C18	Rotor	1	43	861C43	Clutch Cover	1
19	861C19	Rotor Propeller	1	44	861C44	Pin	1
20	861C20	End Plate (Front)	1	45	861C45	Adjust Dial	1
21	861C21	Bearing	1	46	861C46	C-Pin	1
23	861C23	Internal Gear	1	47	861C47	Washer	1
24	861C24	Free Gear	1	48	861C48	Spiling	1
25	861C25	Gear Frame (Back)	1	49	861C49	Pit Stopper	1
26	861C26	Gear Frame (Front)	1	50	861C50	C-Pin	1
27	861C27	Bearing	1				