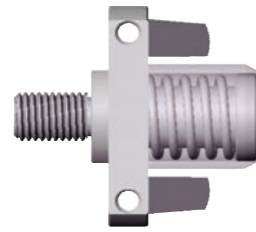
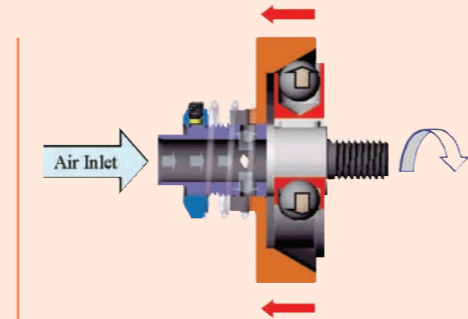


# ILLUSTRATION OF GOVERNOR



## Traditional Governor

Long proven construction with two pendulums. The pendulums extends due to centrifugal force and block intake, also the spring adjusts pendulums by retroaction to control free speed. However, the free speed can not be controlled effectively within standard RPM when air pressure increases.



## Patent Over Speed Control Governor

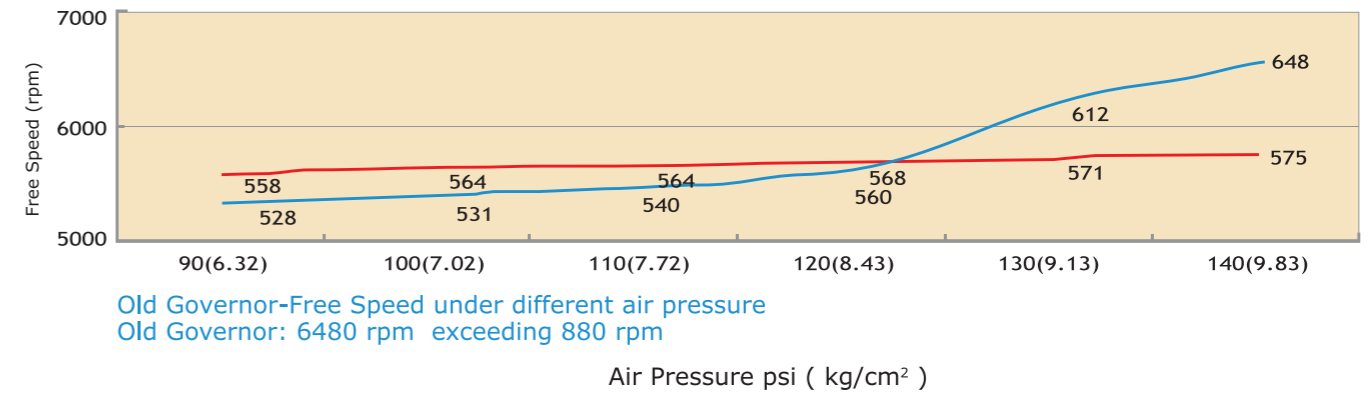
Linear Motion performing from the balls and cone-shape takes over the Centrifugal force from Pendulum Structure. The design of cutting off air prevents overloaded air pressure. It efficiently remains free speed in standard RPM.

Patent No.: US 6,409,584 B1  
Germany Nr.101 51 935

# COMPARISON BETWEEN TRADITIONAL & PATENT OVER SPEED-CONTROL GOVERNOR

Testing Model: GP-918 9" Air Vertical Grinder  
Standard RPM: 5,600 rpm (±200 rpm)  
Testing data:

New Governor-Free Speed under different air pressure  
New Governor: 5750 rpm exceeding 150 rpm only



Old Governor-Free Speed under different air pressure  
Old Governor: 6480 rpm exceeding 880 rpm



**GP-918**  
**GP-918A** for Hub Grinding Wheel  
▶ Patent: Over Speed Control Governor



**GP-917A**



**GP-920**

# AIR VERTICAL / STRAIGHT GRINDER



**GP-919**  
**GP-919A** for Hub Grinding Wheel  
▶ Patent: Over Speed Control Governor



**GP-915**  
**GP-915A** for Hub Grinding Wheel  
▶ Patent: Over Speed Control Governor

Specifications										Recommended Air Pressure 90 psi (6.3 kg/cm <sup>2</sup> )	
Model	Wheel Size	Spindle Thread (inch)	Max. Speed (rpm)	Net Weight (kgs)	Length (mm)	Air Cons. (m <sup>3</sup> /min)	Air Inlet (inch)	Hose Size (mm)	Sound Pressure (dBA)	Vibration (m/sec <sup>2</sup> )	Packing
GP-919	7"	5/8"-11	7,000	4.20	340	0.46	1/2"	13	84	3.3	4 pcs/2.1 cu-ft/G.W.: 21 kgs
GP-915	9"	5/8"-11	6,000	4.40	340	0.46	1/2"	13	83	3.3	4 pcs/2.9 cu-ft/G.W.: 24.5 kgs
GP-918	9"	5/8"-11	5,600	4.97	355	0.76	1/2"	13	90	3.8	4 pcs/2.9 cu-ft/G.W.: 28 kgs
GP-917A	ø75xø9.5x13	--	13,500	1.67	343	0.56	1/4"	10	87	< 2.5	10 pcs/0.90 cu-ft/G.W.: 19.51 kgs
GP-920	ø150xø20x25 (ø32)	1/2"-14	5,700	5.16	500	0.76	1/2"	13	87	< 2.5	4 pcs/1.3 cu-ft/G.W.: 23 kgs

# AIR ANGLE GRINDER



**GP-832**  
**GP-832-5**  
 ▶ Grip Lever  
 ▶ Patent: Over Speed Control Governor



**GP-832L**  
**GP-832L-5**  
**GP-832L-5A** for Hub Grinding Wheel  
 ▶ Safety Lever  
 ▶ Patent: Over Speed Control Governor



▶ Grip Lever  
**GP-971**  
**GP-971-5**



▶ ON/OFF Switch  
**GP-971A**  
**GP-971A-5**



▶ Safety Lever  
**GP-971L**  
**GP-971L-5**



**GP-911**  
 ▶ Safety Lever  
 ▶ Patent: Over Speed Control Governor



**GP-914** Grinder & Sander  
 ▶ Safety Lever  
 ▶ Patent: Over Speed Control Governor



**GP-831**  
 ▶ Grip Lever  
 ▶ Patent: Over Speed Control Governor



**GP-831LN**  
**GP-831LAN** for Hub Grinding wheel  
 ▶ Safety Lever  
 ▶ Patent: Over Speed Control Governor

Specifications											Recommended Air Pressure 90 psi (6.3 kg/cm <sup>2</sup> )		
Model	Wheel Size (inch)	Spindle Thread	Max.Speed (rpm)	Horse Power (HP)	Net Weight (kgs)	Length (mm)	Air Cons. (m <sup>3</sup> /min)	Air Inlet (inch)	Hose Size (mm)	Sound Pressure (dBA)	Vibration (m/sec <sup>2</sup> )	Packing	
GP-832	4"	3/8"-24, M10	12,000	0.6	1.54	227	0.45	1/4"	8	80	< 2.5	10 pcs/1.45 cu-ft/G.W.: 21 kgs	
GP-832-5	5"	5/8"-11, M14	11,000	0.6	1.69	227	0.45	1/4"	8	80	< 2.5	10 pcs/1.45 cu-ft/G.W.: 23 kgs	
GP-832L	4"	3/8"-24, M10	12,000	0.6	1.69	226	0.45	1/4"	8	80	< 2.5	10 pcs/1.75 cu-ft/G.W.: 24 kgs	
GP-832L-5	5"	5/8"-11, M14	11,000	0.6	1.82	226	0.45	1/4"	8	80	< 2.5	10 pcs/1.75 cu-ft/G.W.: 25 kgs	
GP-911	5"	5/8"-11, M14	11,000	0.6	1.79	257	0.45	1/4"	8	80	< 2.5	10 pcs/1.75 cu-ft/G.W.: 25 kgs	
GP-914	4-1/2"	M10	12,000	0.6	1.79	223	0.45	1/4"	8	80	< 2.5	10 pcs/1.75 cu-ft/G.W.: 25 kgs	
GP-831	7"	5/8"-11, M14	7,000	1.0	3.04	277	0.50	3/8"	11	96	3.2	6 pcs/1.8 cu-ft/G.W.: 24 kgs	
GP-831LN	7"	5/8"-11, M14	7,000	1.0	3.05	331	0.50	3/8"	11	96	3.2	6 pcs/2.0 cu-ft/G.W.: 25 kgs	
GP-971	4"	3/8"-24	11,000	0.5	1.34	189	0.68	1/4"	8	95	< 2.5	10 pcs/1.45 cu-ft/G.W.: 18 kgs	
GP-971-5	5"	M14	11,000	0.5	1.39	189	0.68	1/4"	8	95	< 2.5	10 pcs/1.45 cu-ft/G.W.: 18 kgs	
GP-971A	4"	3/8"-24	11,000	0.5	1.72	220	0.68	1/4"	8	95	< 2.5	10 pcs/1.45 cu-ft/G.W.: 18 kgs	
GP-971A-5	5"	M14	11,000	0.5	1.77	220	0.68	1/4"	8	95	< 2.5	10 pcs/1.45 cu-ft/G.W.: 18 kgs	
GP-971L	4"	3/8"-24	11,000	0.5	1.71	233	0.68	1/4"	8	95	< 2.5	10 pcs/1.75 cu-ft/G.W.: 20 kgs	
GP-971L-5	5"	M14	11,000	0.5	1.75	233	0.68	1/4"	8	95	< 2.5	10 pcs/1.75 cu-ft/G.W.: 20 kgs	

# AIR ANGLE GRINDER (STOP-SPANNER FREE SERIES)



**GP-832S**  
 ▶ Grip Lever  
 ▶ Patent: Over Speed Control Governor



**GP-832LS**  
 ▶ Safety Lever  
 ▶ Patent: Over Speed Control Governor



**GP-911S**  
 ▶ Safety Lever  
 ▶ Patent: Over Speed Control Governor



**GP-914S**  
 ▶ Safety Lever  
 ▶ Patent: Over Speed Control Governor

## ONLY ONE SPANNER NEEDED change grinding wheel faster and easier

While replacing grinding disc, fix Gear Shaft by simply turning and pushing the Stop Knob instead of using a stop spanner.



Specifications											Recommended Air Pressure 90 psi (6.3 kg/cm <sup>2</sup> )		
Model	Wheel Size (inch)	Spindle Thread	Max.Speed (rpm)	Horse Power (HP)	Net Weight (kgs)	Length (mm)	Air Cons. (m <sup>3</sup> /min)	Air Inlet (inch)	Hose Size (mm)	Sound Pressure (dBA)	Vibration (m/sec <sup>2</sup> )	Packing	
GP-832S	4", 5"	3/8"-24, M10	11,000	0.6	1.54	227	0.45	1/4"	8	80	< 2.5	10 pcs/1.45 cu-ft/G.W.: 21 kgs	
GP-832LS	4", 5"	3/8"-24, M10	11,000	0.6	1.69	226	0.45	1/4"	8	80	< 2.5	10 pcs/1.75 cu-ft/G.W.: 24 kgs	
GP-911S	5"	5/8"-11, M14	11,000	0.6	1.79	257	0.45	1/4"	8	80	< 2.5	10 pcs/1.75 cu-ft/G.W.: 25 kgs	
GP-914S	4-1/2"	M10	12,000	0.6	1.79	223	0.45	1/4"	8	80	< 2.5	10 pcs/1.75 cu-ft/G.W.: 25 kgs	